

# **A REQUEST FOR PROPOSAL FOR PROFESSIONAL SERVICES CONTRACT**

Department of Highways  
Professional Services Procurement Bulletin 2026-01  
Oldham | 5-80210 | KY-146

This document constitutes a Request for Proposals for a Professional Service Contract from qualified individuals and organizations to furnish those services as described herein for the Commonwealth of Kentucky, Department of Highways.

## **I. PROJECT DESCRIPTION**

County - Oldham  
Route - KY 146  
Item No. - 5-80210.00  
Project Description - Improve safety and reduce congestion on KY-146 (LaGrange Road) from KY-329B (KY-329 Bypass) to KY-393

## **II. PROJECT INFORMATION**

Project Manager - Dave Heil, P.E.  
District 5 Co-PM - Tom Hall, P.E.  
User Division - Planning  
Approximate Fee - \$200,000 Scoping Study (Lump Sum)  
Project Funding - SPP (State Funds)  
Project Length - Approximately 5.03 miles

## **III. PURPOSE AND NEED**

According to the Kentuckiana Regional Planning & Development Agency (KIPDA)'s [2050 Metropolitan Transportation Plan \(MTP\)](#), KY-146 from KY-329B to KY-393 experiences capacity concerns and is frequently congested during peak hours. With planned development in Oldham County, this area is expected to grow. This segment is expected to carry additional traffic resulting in increased congestion and potential for crashes.

The objective of this study is to identify potential improvement concepts to improve safe mobility for all modes on KY-146 between KY-329B and KY-393.

## **IV. DBE GOAL**

The Consultant team may include a DBE Participation Plan with their Response to Announcement to help the Department meet the 11.95% DBE goal established by FHWA. The plan would demonstrate how DBE companies will be mentored or used to assist in the area(s) pertaining to this contract. If included, an additional page will be allowed in the Project Approach (Section 7) to exhibit this plan. No additional points will be provided in the Evaluation Factors for the DBE

Participation Plan.

## **V. SCOPE OF WORK**

Planning efforts will include conducting a Needs Assessment Study, engaging the public, stakeholders, and elected officials throughout the planning process, and developing recommendations for a plan and budget to implement projects that address identified needs. Expected tasks may include, but are not limited to:

- Collecting, summarizing, and verifying existing roadway data
- Gathering and analyzing crash data utilizing methodologies outlined in the Highway Safety Manual (HSM), KTC research, and KYTC's Data Driven Safety Analysis (DDSA) Implementation Plan
- Conducting local official/stakeholder and public involvement activities
- Identifying needs of the users of the corridor and develop potential improvement options utilizing [KYTC's Complete Streets, Roads, and Highways Manual](#) and policy, as well as [TSMO solutions](#).
- Developing a list of prioritized segments and projects
- Developing planning-level cost estimates for all phases (Design, Right-of-Way, Utilities, and Construction) and conducting planning-level benefit-cost analysis of the identified and identifying sources of risk. All risks (including time-based risk) should be accounted for in any cost estimate.
- [Conducting Stage 1 screening under the KYTC Intersection Control Evaluation \(ICE\) Guidance](#) when examining potential intersection or interchange terminal changes.
- Submitting a summary of findings in a Final Report.

This project may be advanced to Preliminary Engineering upon completion of the Initial Planning Study with a Contract Modification. The project may then be advanced to Final Design upon the completion of Preliminary Engineering and Environmental Analysis with a Contract Modification. The selected Consultant will then be required to provide engineering services to perform Final Roadway and possibly Structural Design, including the preparation of any design studies, drainage design, right-of-way plans, construction plans, traffic control plans, and cost estimates as well as any other services that KYTC chooses not to perform with in-house forces.

## **VI. SPECIAL INSTRUCTIONS**

The Department may retain any of the advertised services to be performed by in-house state forces.

Instructions for Response to Announcement can be found at:

<https://transportation.ky.gov/ProfessionalServices/Pages/Respond-to-an-Announcement.aspx>

## **VII. AVAILABLE STUDIES**

[KYTC Planning Study Guidance Page](#)

[Draft 2025 Oldham County Comprehensive Plan – Transportation](#)

## **VIII. METHOD OF DESIGN**

The selected Consultant shall utilize the most recent CADD Standards for Highway Plans Policy in the development of the highway plans. Refer to the 2022 CADD Standards for ORD V4.4 Project Development Memo for information pertaining to the latest CADD Standards and plan submittal.

## **IX. ENVIRONMENTAL SERVICES**

Any necessary Environmental Services are likely expected to be provided by the Consultant. If needed, an Environmental Overview Report with a red flag summary may be required in the final report. Environmental services necessary for completion of Preliminary Engineering or Final Design may be added by contract modification at the appropriate time. At any time, if the Department has the capacity to provide these services, the Department may retain the advertised environmental services. Prequalification in Environmental Services is not required to be identified in the Consultant's Response to Announcement.

## **X. PHOTOGRAMMETRIC SERVICES**

The Consultant will provide mapping and will furnish manuscripts in ORD format. Statewide Elevation data and Aerial photography can be found at the following link [KyFromAbove - Kentucky's Aerial Photography & Elevation Data Program](#). The selected Consultant shall supplement this information with conventional surveying as determined during project scoping.

## **XI. STRUCTURE DESIGN**

Structure Design is not anticipated for the Planning Study. When the project advances to Preliminary Engineering/Final Design and if the selected Consultant is retained for Final Design services, the selected Consultant shall do the necessary engineering services to submit to the KYTC an Advanced Situation Folder(s) for the appropriate structure(s). The selected Consultant may be responsible for any necessary Structure Design services. Structure Design of the proposed structure(s) may be added as a Contract Modification. Prequalification in the area of Structure Design is not required to be identified in the Consultant's Response to Announcement.

## **XII. GEOTECHNICAL SERVICES**

The selected Consultant may provide all Geotechnical Services required for the project. A future Preliminary Design contract may include preliminary geotechnical services to review available geological, mining, or other geotechnical information that could influence the selection of the preferred alternate. Geotechnical services necessary for the completion of Final Design may be added by contract modification at the appropriate time. At any time, if the Department has the capacity to provide these services, the Department may retain the advertised geotechnical services. Prequalification in Geotechnical Services is not required to be identified in the Consultant's Response to Announcement.

## **XIII. TRAFFIC ENGINEERING**

The selected Consultant will provide the analysis of the existing and proposed operations. Traffic

Signal Design and Lighting Design services, if necessary for the completion of Final Design, may be added by Contract Modification at the appropriate time. At any time, if the Department has the capacity to provide these services, the Department may retain the advertised traffic services.

#### **XIV. UTILITIES**

The selected Consultant will identify existing utility facilities within the project area and complete or contribute to a utility conflict matrix, documenting those that may be negatively impacted by the project. The Consultant shall document the following for each utility in the conflict matrix: type of utility, owner of utility, quantify the extent they may be impacted, potential impacts to project budget, potential impact to project schedule, confidence of utility location depicted, and recommendations for remedy.

#### **XV. PREQUALIFICATION REQUIREMENTS**

To respond to this project the Consultant must be prequalified in the following areas by the response due date of this advertisement:

##### ROADWAY DESIGN

- Rural Roadway Design
- Urban Roadway Design
- *Advanced Traffic Engineering Design & Modeling\* (see note below)*
- *Surveying\* (see note below)*

##### TRAFFIC ENGINEERING

- Traffic Engineering
- *Electrical Engineering Roadway Lighting\* (see note below)*
- *Electrical Engineering Traffic Signals\* (see note below)*

##### TRANSPORTATION PLANNING

- Traffic Forecasting
- Traffic Data Collection
- Pedestrian & Bicycle Planning & Design
- Transportation Planning Engineering
- Conceptual Transportation Planning
- *Advanced Transportation Planning Engineering\* (see note below)*
- *Travel Demand & Simulation Modeling\* (see note below)*

##### Environmental & UST Services\* (see note below)

- *UST & Hazmat Preliminary Site Assessment (Phase 1)\**

##### Environmental Aquatic & Terrestrial Ecosystems Analysis\* (see note below)

- *Fisheries\**
- *Botany\**
- *Terrestrial Zoology\**
- *Wetlands\**
- *Freshwater Macroinvertebrates\**
- *Water Quality\**

Environmental Archaeology & Other Services\* (see note below)

- Air Quality Analysis\*
- Prehistoric Archaeology\*
- Socio-Economic Analysis\*
- Highway Noise Analysis\*
- Historic Archaeology\*
- Environmental Document Writing & Coordination\*
- Cultural-Historic Analysis\*
- Stream & Wetland Mitigation\*

Geotechnical Services

- Geotechnical Engineering\*

Intelligent Transportation Systems\* (see note below)

- System Design, Deployment & Integration\*
- System Maintenance, Management & Operations\*
- Technology / System Evaluation\*

Structure Design\* (see note below)

- Spans Under 500 Feet\*

\* Note – These prequalifications are not required with the initial proposal as it is uncertain to the extent practicable if they are necessary. Should these services become necessary during the delivery of the project in this or future phases, the selected Consultant team must obtain the required qualifications before providing those services or bring on a prequalified subconsultant at that time.

## **XVI. PROCUREMENT SCHEDULE**

Dates other than Response Date are tentative and provided for information only.

- |                            |  |
|----------------------------|--|
| • Advertisement Date:      | July 8, 2025                                 |
| • Response Date:           | July 30, 2025 by 4:30 PM ET (Frankfort Time) |
| • First Selection Meeting: | August 4, 2025                               |
| • Final Selection:         | August 20, 2025                              |
| • Pre-Design Conference:   | August 27, 2025                              |
| • Consultant Fee Proposal: | September 5, 2025                            |
| • Contract Negotiations:   | September 17, 2025                           |
| • Notice to Proceed:       | October 8, 2025                              |

## **XVII. PROJECT SCHEDULE**

- |                               |              |
|-------------------------------|--------------|
| • First Project Team Meeting  | January 2026 |
| • Second Project Team Meeting | April 2026   |
| • Third Project Team Meeting  | June 2026    |
| • Draft Report                | August 2026  |
| • Final Report                | October 2026 |

## **XVIII. EVALUATION FACTORS**

Consultants will be evaluated by the selection committee based on the following weighted factors:

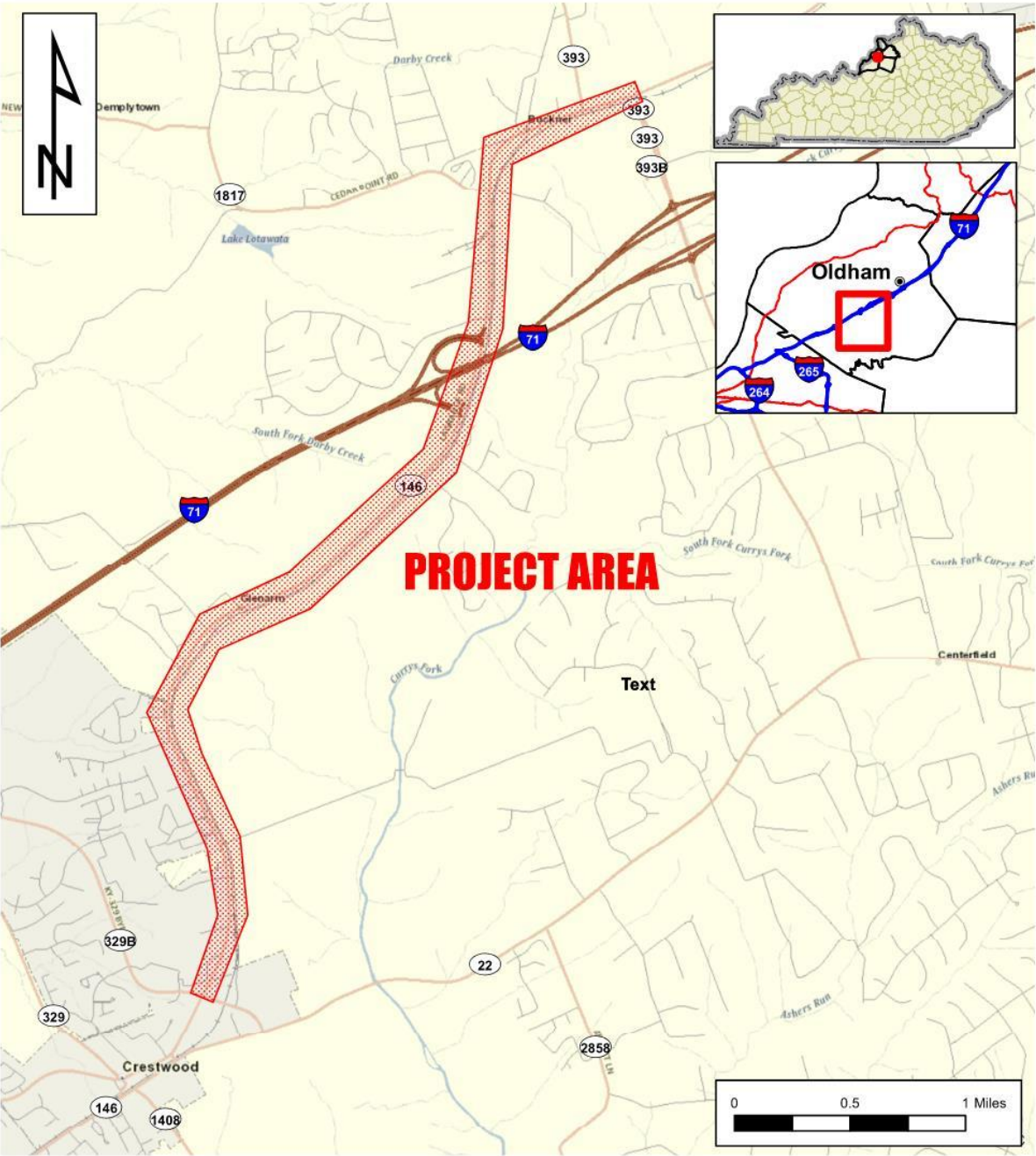
1. Project approach and proposed procedures to accomplish the services for the project. (20 Points)
2. Relative experience of consultant personnel assigned to project team with highway project for KYTC and/or federal, local or other state governmental agencies. (15 Points)
3. Past record of performance on projects similar in type and complexity. (15 Points)
4. Capacity to comply with project schedule. (10 Points)
5. The Consultant demonstrates a comprehensive understanding of safety strategies and the ability to generate meaningful ideas that can measurably enhance the safety of the completed project. This includes both the immediate effectiveness and the long-term safety impacts of the finished facility. (5 Points)
6. Knowledge of the locality and familiarity of the general geographic area. (2 Points)

## **XIX. SELECTION COMMITTEE MEMBERS**

1. Tom Hall, P.E., User Division
2. Stephen De Witte, P.E., User Division
3. Emily Deason, P.E., Secretary's Pool
4. Casey Smith, P.E., Secretary's Pool
5. Brian Wood, P.E., Governor's Pool



XX. AREA MAP



**Oldham County**  
**Item No. 5-80210**  
**KY 146**  
**LaGrange Road**

Disclaimer: KYTC provides this map as a reference only. Users are to validate information independently.  
Copyright: 2025 Kentucky Transportation Cabinet. All rights reserved.

Date: 6/20/2025 